

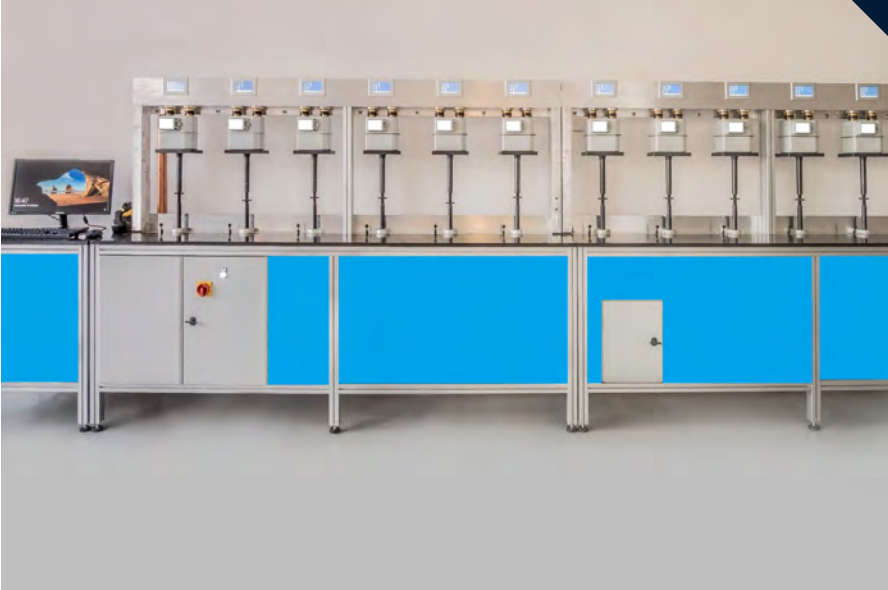


BESSEL

MEASUREMENT **AT 360°**

—
Design and Manufacture of
Gas measuring systems
and instruments

OUR COMPANY



Bessel is an entrepreneurial reality born from decades of experience of professionals working in the field of gas volume measurements.

The company manufactures and supplies laboratory gas meters and specialises in **design and construction of complete laboratories**, with particular regard to test benches for gas meters. The in-depth knowledge in the field of laboratory test equipment and gas measuring systems, the ability of providing the instrumentation that best meets our customer specific requirements and the high technical level of the services offered are elements that distinguish us.

We can also supply **other instruments** for laboratory use, with different flow rate ranges and provided with **calibration certificate** made by our trusted laboratory.

MEASURING INSTRUMENTS

Our exclusive **Laboratory Gas Meters** widely known for their high measurement accuracy are fully made in our Italian factory and calibrated by our EN ISO/IEC 17025 accredited laboratory. Specifically designed to be used in laboratories, test facilities (including our Test Benches), precision measurement applications, industrial branches etc, they can also be provided with rotary pulser for digital reading. They can measure different gases like air, hydrogen, nitrogen, carbon dioxide, coke oven gas, fossil gas, gasogene gas, acetylene, propane, methane, oxygen, butane, biogas etc.



DRY TYPE GAS METERS G 4-10 SERIES

Laboratory diaphragm gas meters G 4-10 are widely known for its **compact design** and its **high durability** over the years.

WET TYPE GAS METERS BSM SERIES

BSM stainless-steel laboratory gas meters are specifically designed according to CROSLY system, reaching **high accuracy in volumetric measurements of gas** at low flow rates.



TEST BENCHES BTU AND BTC SERIES

Bessel Test benches are designed and tailored on specific client requirements in order to meet the highest standards in terms of accuracy, ease of use and cost efficiency. Widely used in metrology laboratories, gas meter factories and by gas distribution companies all over the world, our BTU and BTC series use **ULTRASONIC PRINCIPLES** or **GASOMETRIC BELL** as Reference standards in their test performance. From domestic to industrial gas meters, we are capable to provide different options also including further reference standards.



Our Test Benches include **certificate**
and training course for their correct use.



DESIGN

Alongside our partners with tailor-made instruments and solutions with the highest reliability.



GLOBAL PRESENCE

Our company is not only active in the national territory, it is also recognised worldwide.



AVANT-GARDE

Bessel Srl is continuously growing, being in step with new technological trends and methods.

OUR STRENGTHS



BESSEL



Improving Laboratory Experience

BESSEL S.R.L.

Via Rodolfo Morandi, 44/b
06012, Città di Castello (PG)



www.bessel.it

Follow Us



PHONE: +39 075 852 21 89

E-MAIL: info@bessel.it

WEBSITE: www.bessel.it